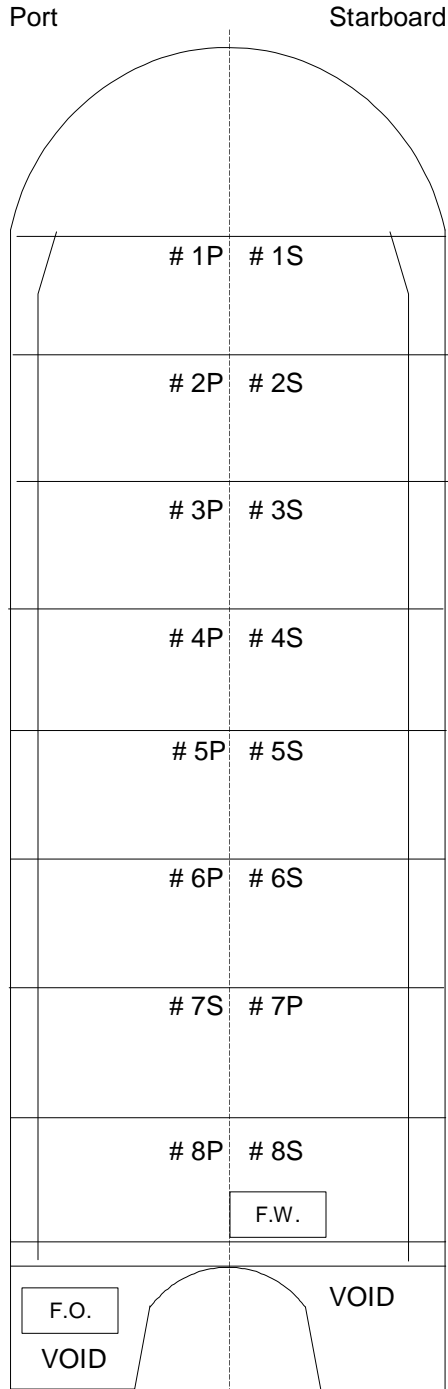


**B. NO. 240 - VESSEL -SPECIFIC INFORMATION**



PRINCIPAL CHARACTERISTICS

OFFICIAL NUMBER: 998038  
 SERVICE: Tank Barge  
 GROSS TONS: 9242  
 NET TONS: 9242  
 CONSTRUCTION: Double Hull - Welded Steel  
 BUILT: Pearlinton, MS  
 DATE BUILT: 12/10/1993

HOME PORT: New York  
 DIMENSIONS (FT):  
 LOA 446  
 Beam 80  
 Draft 36

OWNER: B.No.240 Corp.  
 58 South Service Road, #150,  
 Melville, NY 11747

OPERATOR: Bouchard Transportation Co. Inc.  
 58 South Service Road, #150,  
 Melville, NY 11747

Tank Capacities (BBL)

# Cargo Tanks:	16			
Cargo Tanks	1P 8,446	1S 8,446	2P 9,116	2S 9,116
	3P 9,116	3S 9,116	4P 9,116	4S 9,116
	5P 9,116	5S 9,116	6P 9,116	6S 9,116
	7P 7,976	7S 7,976	8P 8,539	8S 8,539
Cargo	70,541		70,541	
Fuel (F.O.)	125			
Lube Oil	0			

**Maximum Capacity 141,207 BBL** (Cargo, Fuel, Lube)  
 Ballast 0 BBL  
 Fresh Water 50 BBL